



# BROUWER

## ILLUSTRATED PARTS LIST

---

**MODEL:**

**7990236 ROLLMATE SOD LAYER 30" ROM2430**



*WARNING: If incorrectly used this machine can cause severe injury. Those who use and maintain this machine should be trained in its proper use, warned of its dangers and should read the entire manual before attempting to set up, operate, adjust or service the machine.*

---

November 2006

4135726 REV A

)

)

)



## STATEMENT OF LIMITED WARRANTY

**Kesmac and Brouwer Turf** warrants its full line of equipment to be free from defects in material and factory workmanship for a period of 12 months. This warranty begins on the date of sale or use of the equipment to the original purchaser. This statement does not extend or limit engine, tractor or component warranties in which the engine, tractor or component manufacturers may carry extended time periods up to 24 months. Engine, tractor or component warranty claims will be subject to the engine, tractor or components manufacturer's approval.

**Replacement Parts** carry a 90 day replacement warranty and are reimbursed to the dealer. All electrical and hydraulic parts are limited by this policy and will only be covered upon approval by the service department after inspection of the part. The installation and removal of a part will automatically place that part under the replacement parts warranty.

This warranty is limited exclusively to equipment or accessories manufactured or supplied by **Kesmac and Brouwer Turf** and are subject to the inspection and analysis by the company to conclusively identify the nature and cause of failure.

**PRODUCT REGISTRATION FORM** must be completely filled out, signed by the customer at the original date of installation, and returned to **Kesmac and Brouwer Turf** before any claims will be considered.

**Kesmac and Brouwer Turf** reserves the right to incorporate improvements in material and design of its products without notice and is not obligated to make the same improvements to equipment previously manufactured.

**Kesmac and Brouwer Turf** is not obliged under any warranty policy different from the Kesmac Brouwer Turf warranty policy as published above.

### KESMAC AND BROUWER TURF RESPONSIBILITIES

**Kesmac and Brouwer Turf**'s obligation under the terms of this warranty is limited to the repair, replacement or credit, at its option, of the equipment, parts or supply items that conform to its warranty.

**Kesmac and Brouwer Turf** will pay for the parts and the cost of surface transportation for the parts that conform to this warranty.

### DEALER'S RESPONSIBILITIES

1. Only factory-trained service or approved personnel will be permitted to perform warranty service on **Kesmac and Brouwer Turf** equipment.
2. All major warranty claims exceeding \$650.00 (in total including parts and labour) must be authorized by **Kesmac and Brouwer Turf** before work is performed.
3. All replacement parts used in warranty situations must be furnished by **Kesmac and Brouwer Turf** or approved by **Kesmac and Brouwer Turf** personnel. The use of non-recommended oil could nullify warranty.

### OWNERS RESPONSIBILITIES

The owner is obligated to operate and maintain the equipment in accordance with the recommendations published by **Kesmac and Brouwer Turf** in the owners/operators manual for the unit. The owner is responsible for the costs associated with such maintenance and operating adjustments that may be required on a regularly scheduled basis. Where applicable the owner is responsible for transportation to and from the dealership or service calls made by the dealer.

### CONDITIONS THAT VOID WARRANTY

This warranty shall not apply to equipment which:

- 1. Has had repairs or modifications not authorized by **Kesmac and Brouwer Turf**.
- 2. Has been subject to abuse, improper maintenance, or improper application.
- 3. Has been modified from original equipment specifications.

### WARRANTY EXCEPTIONS

This warranty does not apply to the following items:

- 1. Wear items including blades, cutting edges, spark plugs, belts, filters, bearings, sprockets, chains, tires, light bulbs, lubricants and fluids etc. Cost of normal maintenance including replacement of service items.
- 2. Damages to engine/drive systems caused by lack of/ or improper lubricants and/ or fluids.
- 3. Damages arising from accident, misuse or neglect.
- 4. Damages to engine/drive systems caused by improper operation and/ or maintenance.
- 5. **Kesmac and Brouwer Turf** will not be liable for any incidental or consequential damage or injuries, including but not limited to loss of profits, loss of crops, rental of substitute equipment, or other commercial loss or for damage to the equipment in which the Company Product is installed.

### FREIGHT CARRIER DAMAGE

Claims for equipment damaged in transit should be referred to the freight carrier. Visible damage should be reported immediately and concealed damage as soon as possible, in accordance with freight carrier regulations.



# BROUWER

289 N. Kurzen Rd., P.O. Box 504, Dalton, OH 44618  
Tel. (330) 828-0200 Fax. (330) 828-1008

Date of Purchase: Month \_\_\_\_\_ Day \_\_\_\_\_ Year \_\_\_\_\_

Dealer Name \_\_\_\_\_ Phone \_\_\_\_\_

Serial Number \_\_\_\_\_

Model Number \_\_\_\_\_

*ALWAYS GIVE THE SERIAL NUMBER, MODEL NUMBER AND PART COLOR WHEN ORDERING SERVICE PARTS.*



# ROLLMATE SOD LAYER

---

---

---

## IMPORTANT

---

Your new **ROLLMATE SOD LAYER** has been designed and built to give many years of outstanding performance. The service and reliability you receive from this product will be affected by the proper maintenance and operation of the machine.

It is important the operator of the machine follows all recommended operating procedures and service schedules, to ensure the safety of the machine, themselves and any bystanders.

It is not possible to list all situations that may effect the safety of the machine or the operators, therefore Brouwer cannot identify all precautions that may possibly prevent accidents.

The owner/operator must assume responsibility for their own safety, the safety of others and of the machine.

### BE A QUALIFIED OPERATOR BY ;

- Reading and obeying the instructions in this manual and on the safety decals on the machine.
- Receiving training on the correct operation of the machine.
- Asking your supervisor or equipment dealer to explain anything you do not understand.
- Explaining the instructions in the operator's manual and safety decals to user/operators who cannot read or understand them.

### IF YOU DO NOT UNDERSTAND....ASK

Use only genuine Brouwer replacement parts. Parts not supplied by Brouwer may not meet factory specifications or standards of manufacture. The use of non-approved parts may result in component failure and result in an accident to the operator or bystanders.

The Brouwer **ROLLMATE SOD LAYER** must not be used for any purpose other than that for which they are designed.

Prior to shipping from the manufacturer the machines are inspected to insure that all safety guards, shields and warning/safety/operating decals are correctly positioned and secure.

The machine must not be used if any of the above items are missing or damaged.

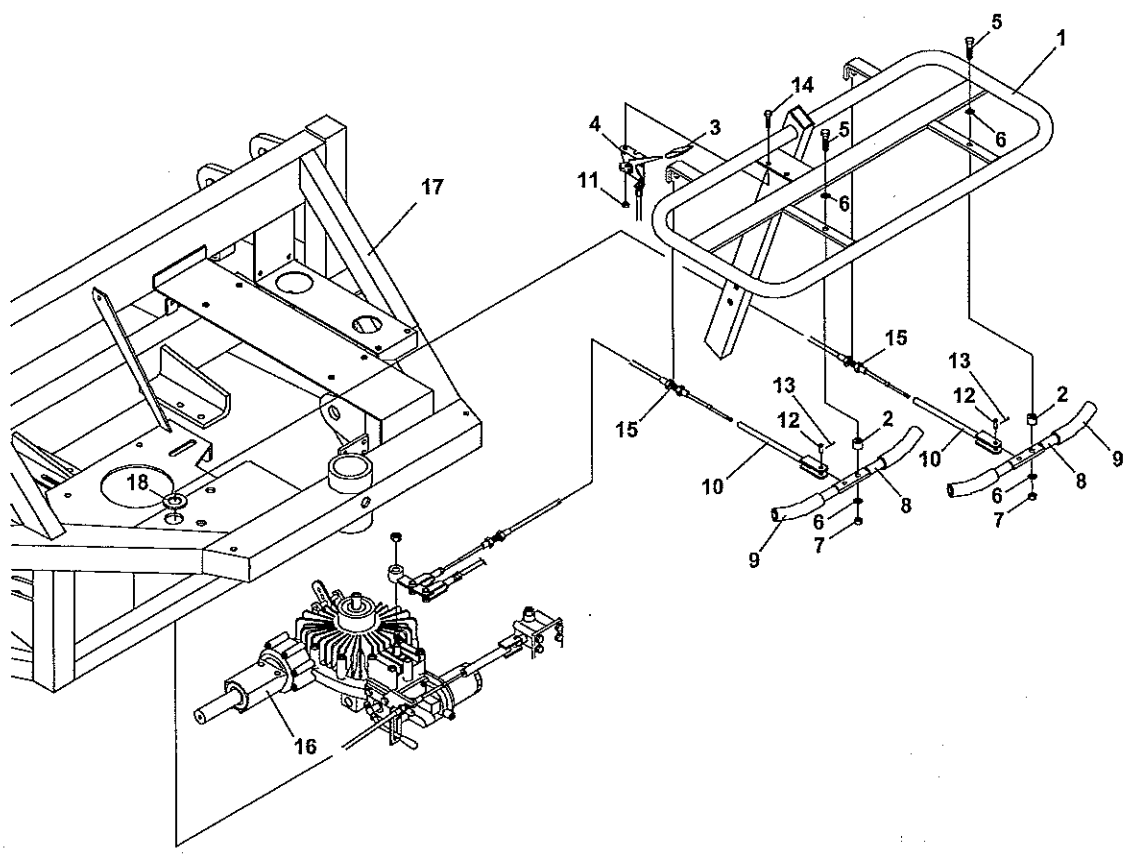
---

TABLE OF CONTENTS	FIGURES	PAGE
CONTROLS .....	FIGURE 1 .....	2, 3
REAR DRIVE PARTS / BRAKE .....	FIGURE 2 .....	4, 5
FORWARD/REVERSE/THROTTLE CNTRLS ...	FIGURE 3 .....	6, 7
DRIVE BELTS .....	FIGURE 4 .....	8, 9
FRONT WHEEL ASSEMBLY .....	FIGURE 5 .....	10, 11
REAR WHEEL ASSEMBLY .....	FIGURE 6 .....	12, 13
LIFT FRAME .....	FIGURE 7 .....	14, 15
ENGINE/TANKS/SHIELDS .....	FIGURE 8 .....	16, 17
HYDRAULIC ASSEMBLY .....	FIGURE 9 .....	18, 19
DECALS .....	FIGURE 10 .....	20, 21

# CONTROLS

# ROLLMATE SOD LAYER

FIGURE 1





# ROLLMATE SOD LAYER

# CONTROLS

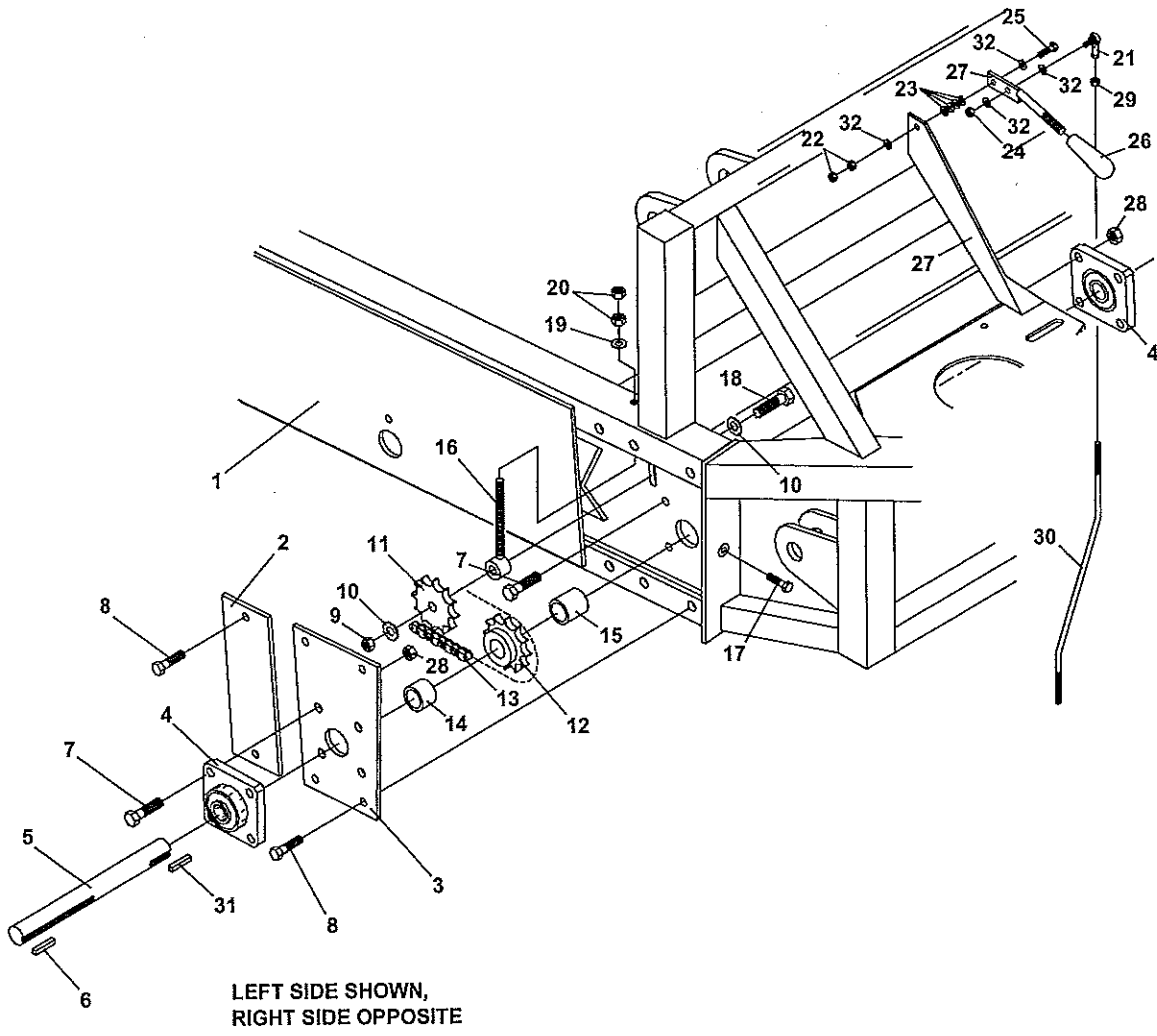
## FIGURE 1

ITM	PART NO.	DESCRIPTION	QTY	ITM	PART NO.	DESCRIPTION	QTY
1	6102200.7	HANDLE WELD ASSY	1				
2	6102143	SPACER-CONTROL	2				
3	47-137	KNOB-THROTTLE	1				
4	47-136	CABLE-THROTTLE CNTRL	1				
5	64123-61	BLT-HEX 5/16-18X1-3/4	2				
6	64163-04	25/64X5/8X16GA WASHER	4				
7	64229-02	LOCKNUT-NYLON 5/16-18	2				
8	6102079.7	CNTRL LEVER WELD ASSY	2				
9	47-121	HANDLE-GRIP 4-1/2"	4				
10	6102150.7	CABLE EXTENSION WLDMT	2				
11	64229-01	LOCKNUT-NYLON 1/4-20	2				
12	03-0408	CLEVIS PIN, 1/4 X 1	2				
13	64140-3	COTTER PIN-3/32X3/4	2				
14	99-K77	BOLT,BUTTON HD	2				
15	47-073	THROTTLE CABLE	2				
16	51-038	TRANSAXLE, EATON	1				
17	6102212.7	FRAME-MAIN	1				
18	05-033	GROMMET-7/8 ID X 1-5/8 OD	1				

# REAR DRIVE PARTS / BRAKE

# ROLLMATE SOD LAYER

FIGURE 2



# ROLLMATE SOD LAYER

# REAR DRIVE PARTS / BRAKE

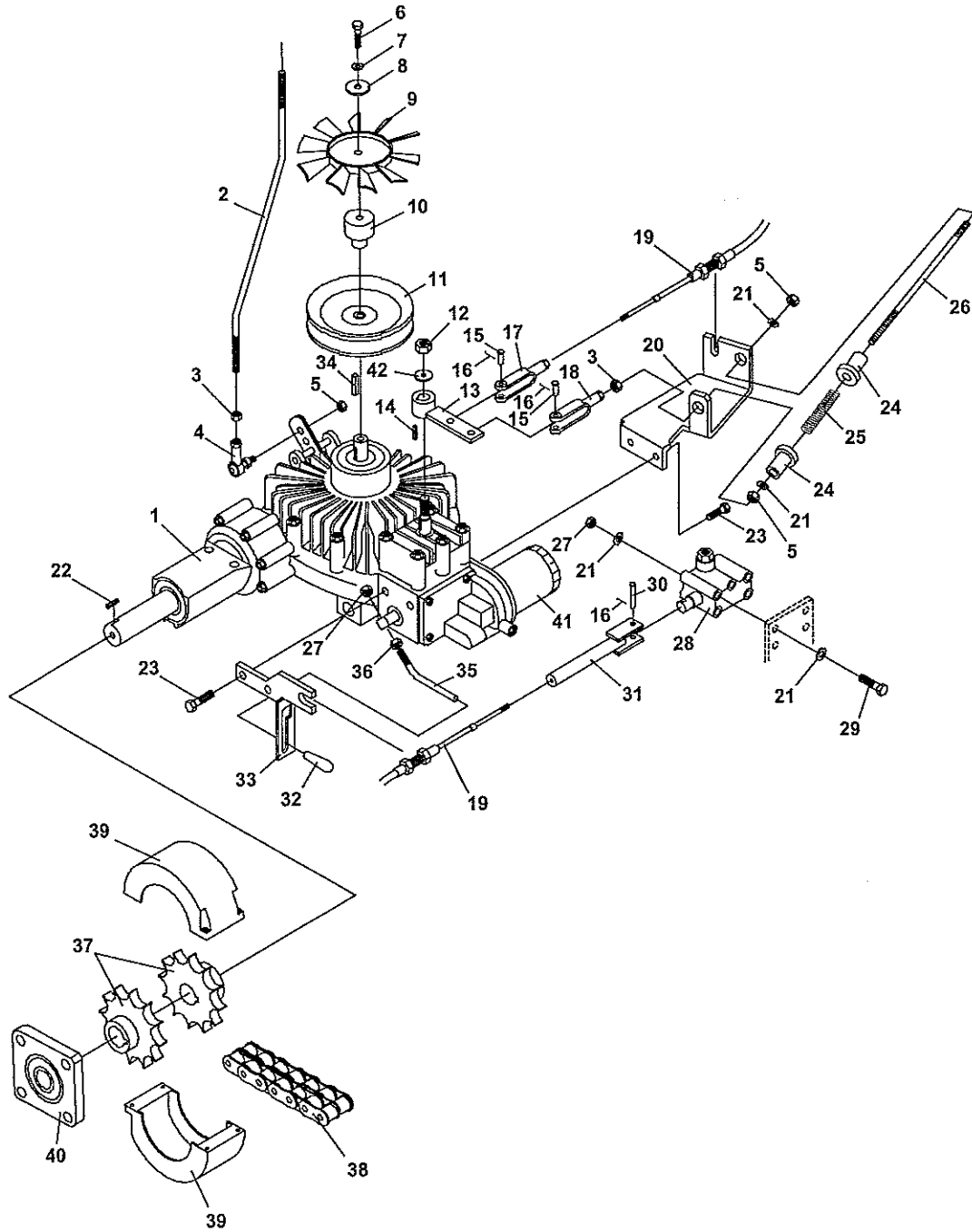
## FIGURE 2

ITM	PART NO.	DESCRIPTION	QTY	ITM	PART NO.	DESCRIPTION	QTY
1	6102212.7	FRAME-MAIN	1				
2	6102006.7	RAIL-ACCESS PANEL	2				
3	6102005.7	RAIL-JKSHFT SPRKT CVR	2				
4	55-FB22016	BRG-4-BOLT FLANGE 1"	4				
5	6102161	SHAFT-REAR STUB 30"	2				
6	64164-12	KEY-1/4X1/4X1	2				
7	64139-18	BLT-WLF 3/8-16X1-1/4	16				
8	64139-24	BLT-WLF 3/8-16 X 1	12				
9	64229-05	LOCKNUT, 1/2-13 NYL	2				
10	64163-67	WASHER-.516X1X12GA	4				
11	83-5013E08	IDLER-SPRKT #50	2				
12	83-502016	SPROCKET-#50	2				
13	6102087	CHAIN-DRIVE	2				
	81-053	CONNECTOR LINK #50	1				
	81-055	HALF LINK #50	2				
14	6102129	SPACER-R SPRKT OUTER	2				
15	6102128	SPACER-R SPRKT INNER	2				
16	6102098	BRKT-IDLER WLDMT	2				
17	F2742	SCREW-5/16-18 X 3/4	2				
18	64123-72	BLT-HEX 1/2-13X2-1/2	2				
19	64163-61	WSHR .81X.406X16GA	2				
20	92-06H	NUT,3/8-16	4				
21	43-004SA	YOKE END-1/4-28	1				
22	64025-01	NUT-1/4-20 HEX	2				
23	64163-86	WSHR-.265 X .625 X .125	4				
24	99-A04NF	LOCKNUT-1/4	1				
25	64123-07	BOLT, 1/4-20X1-1/2	1				
26	47-114	KNOB	1				
27	6102115.7	LEVER-BRAKE HANDLE	1				
28	64141-4	NUT-WLF 3/8-16	16				
29	64025-23	NUT-HEX 1/4-28	1				
30	6102112	ROD-BRAKE	1				
31	85-K0412	KEY, 1/4 X 1-1/2	2				
32	64163-03	WSHR-.256IDX.62ODX18GA	4				

# FORWARD/REVERSE/THROTTLE CNTRLS

# ROLLMATE SOD LAYER

FIGURE 3



# ROLLMATE SOD LAYER

## FORWARD/REVERSE/THROTTLE CNTRLS

FIGURE 3

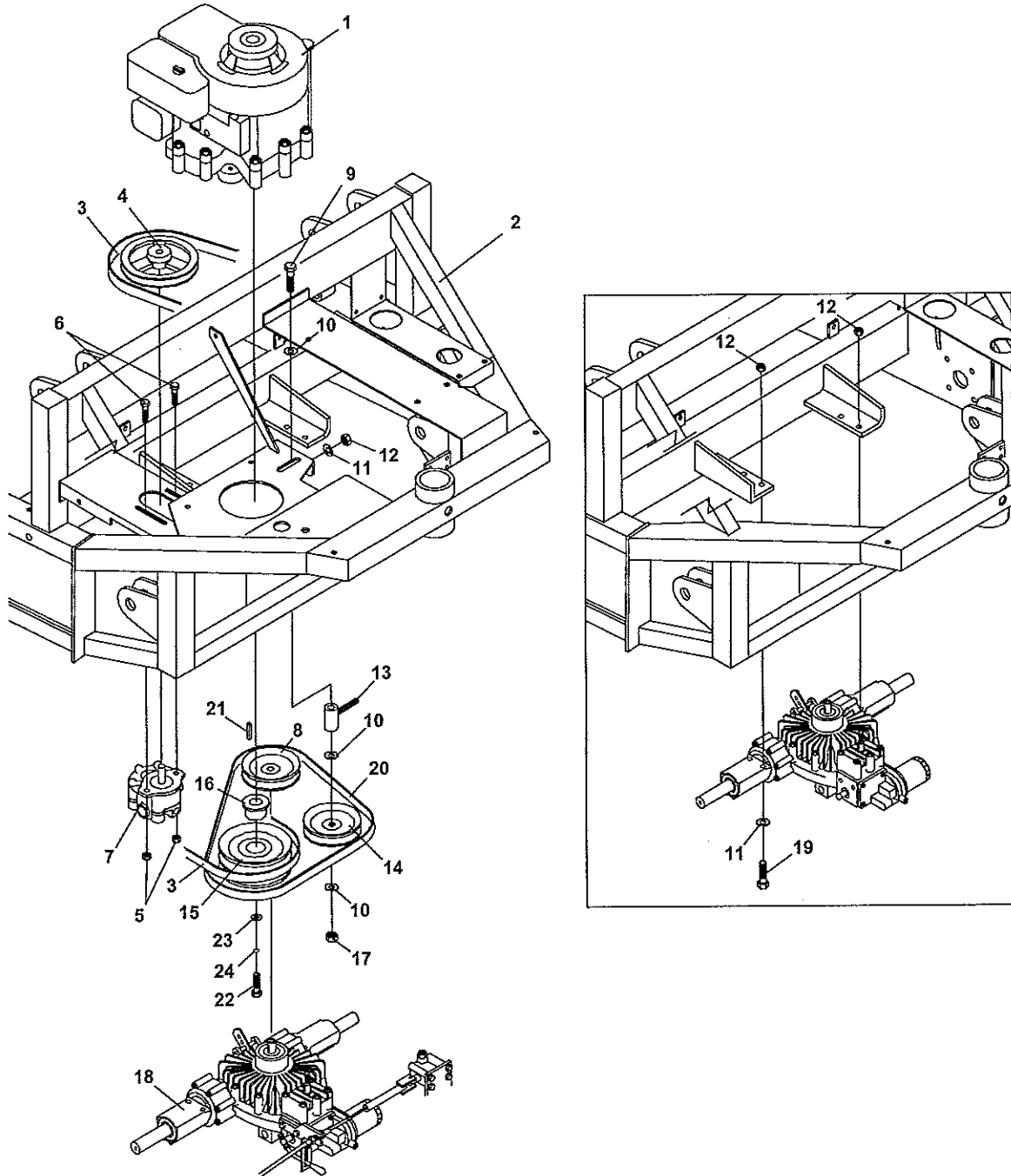
ITM	PART NO.	DESCRIPTION	QTY	ITM	PART NO.	DESCRIPTION	QTY
1	51-038	TRANSAXLE	1				
2	6102112	ROD-BRAKE	1				
3	64025-23	NUT-HEX 1/4-28	2				
4	43-004SA	ROD END	1				
5	99-AC04NF	LOCKNUT-CENTER 1/4	3				
6	64123-60	BOLT, 1/4-20X2	1				
7	64006-01	LOCKWASHER-1/4	1				
8	99-B35	WASHER, FENDER 1/4"	1				
9	M5064	FAN, 7" OD, 10 BLADE	1				
10	6102100	SPACER, FAN	1				
11	83-044	SHEAVE	1				
*	64044-13	SCREW-SET 1/4-28X1/4	2				
12	64151-18	NUT, HEX	1				
13	6102074.7	LEVER, F-N-R WELDMENT	1				
14	85-W0204	KEY,HARDENED 1/8 X .491	1				
15	64188-06	PIN, CLEVIS 1/4X.77	2				
16	64140-3	COTTER PIN-3/32X3/4	3				
17	43-Y0304F	YOKE END	1				
18	43-Y0404F	YOKE END	1				
19	47-073	CABLE F/PUMP	2				
20	6102075.7	BRKT-F-N-R	1				
21	64163-86	WSHR-FLAT.265X.625X.125	10				
22	64164-13	1/4X1/4X2 SQ KEY	2				
23	64139-08	BOLT-5/16-18X3/4	4				
24	6102076	PIPE-SLIDE F-N-R	2				
25	41-080	SPRING	1				
26	6102147	ROD-NEUTRALIZING F-N-R	1				
27	64229-01	LOCKNUT-NYLON 1/4-20	5				
28	23-137	VALVE, 1-SPOOL W/FLOAT	1				
29	90-0424	BOLT 1/4 UNC x 3	4				
30	03-0310	CLEVIS PIN, 3/16 X 1-1/4	1				
31	6102132.7	VALVE-CABLE END	1				
32	47-122	CAP, LEVER	1				
33	6102110.7	BRKT-CABLE/TOW WLDMT	1				
34	85-W0305	WOODRUFF KEY	1				
35	6102111	LEVER-TOW	1				
36	F1002	NUT, JAM 1/4-20	1				
37	87-219	COUPLER-C5016 X 1"	4				
38	87-220	COUPLER-CHAIN	2				
39	87-221	COUPLER-COVER ASSY	2				
40	55-FB22016	BRG-4-BOLT FLANGE 1"	2				
41	21-103144	FILTER-TRANSAXLE	1				
42	64163-61	WSHR .81X.406X16	1				

\* NOT ILLUSTRATED

# DRIVE BELTS

# ROLLMATE SOD LAYER

FIGURE 4



# ROLLMATE SOD LAYER

# DRIVE BELTS

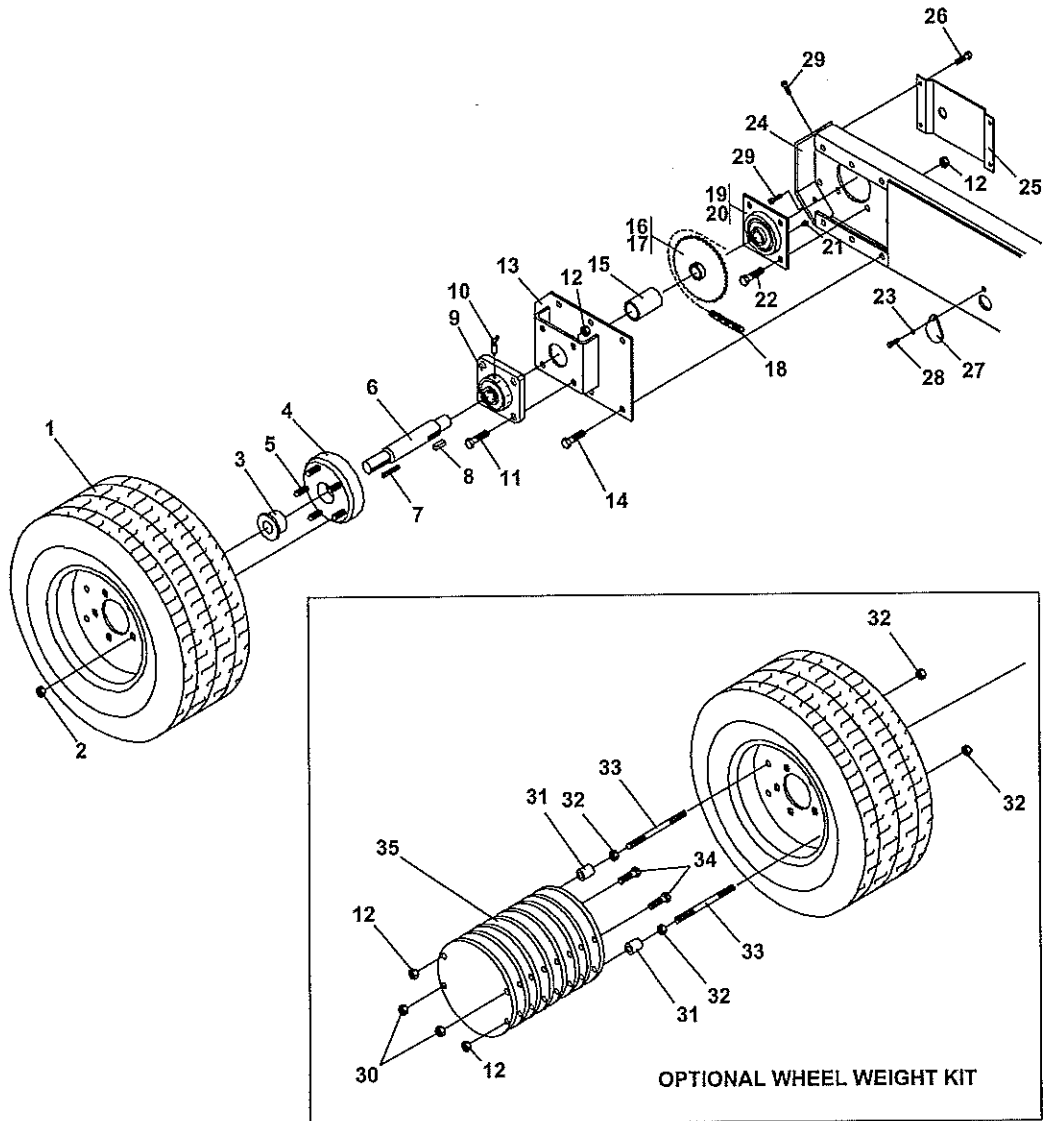
## FIGURE 4

ITM	PART NO.	DESCRIPTION	QTY	ITM	PART NO.	DESCRIPTION	QTY
1	13-110	ENGINE-HONDA 11 HP	1				
2	6102212.7	FRAME-MAIN	1				
3	D2115	BELT-A31	1				
4	83-AK6408	SHEAVE	1				
5	64141-6	NUT, 5/16-18	2				
6	PP-K02	BOLT, FLANGE 5/16-18 X 1	2				
7	21-097	PUMP, HYD. GEAR	1				
8	83-044	SHEAVE	1				
9	90-0830	BOLT, 1/2-13 X 3-3/4	1				
10	64163-67	WASHER-.516X1X12GA	3				
11	64163-61	WSHR .81X.406X16GA	5				
12	64229-03	LOCKNUT-NYLON 3/8-16	5				
13	6102205	IDLER ADJUSTER	1				
14	83-012	PULLEY, IDLER	1				
15	83-2AK39H	SHEAVE	1				
16	83-H16	BUSHING	1				
17	64229-05	LOCKNUT, 1/2-13 NYLON	1				
18	51-038	TRANSAXLE	1				
19	64123-79	BLT-HEX 3/8-16X3-1/4	4				
20	81-A039	BELT-A39	1				
21	64164-13	1/4X1/4X2 SQ KEY	1				
22	91-0710	BOLT,7/16-20 X 1-1/4	1				
23	64163-43	WSHR.443/.454X1X11GA	1				
24	64006-06	LOCKWASHER-7/16	1				

# FRONT WHEEL ASSEMBLY

# ROLLMATE SOD LAYER

FIGURE 5





# ROLLMATE SOD LAYER

# FRONT WHEEL ASSEMBLY

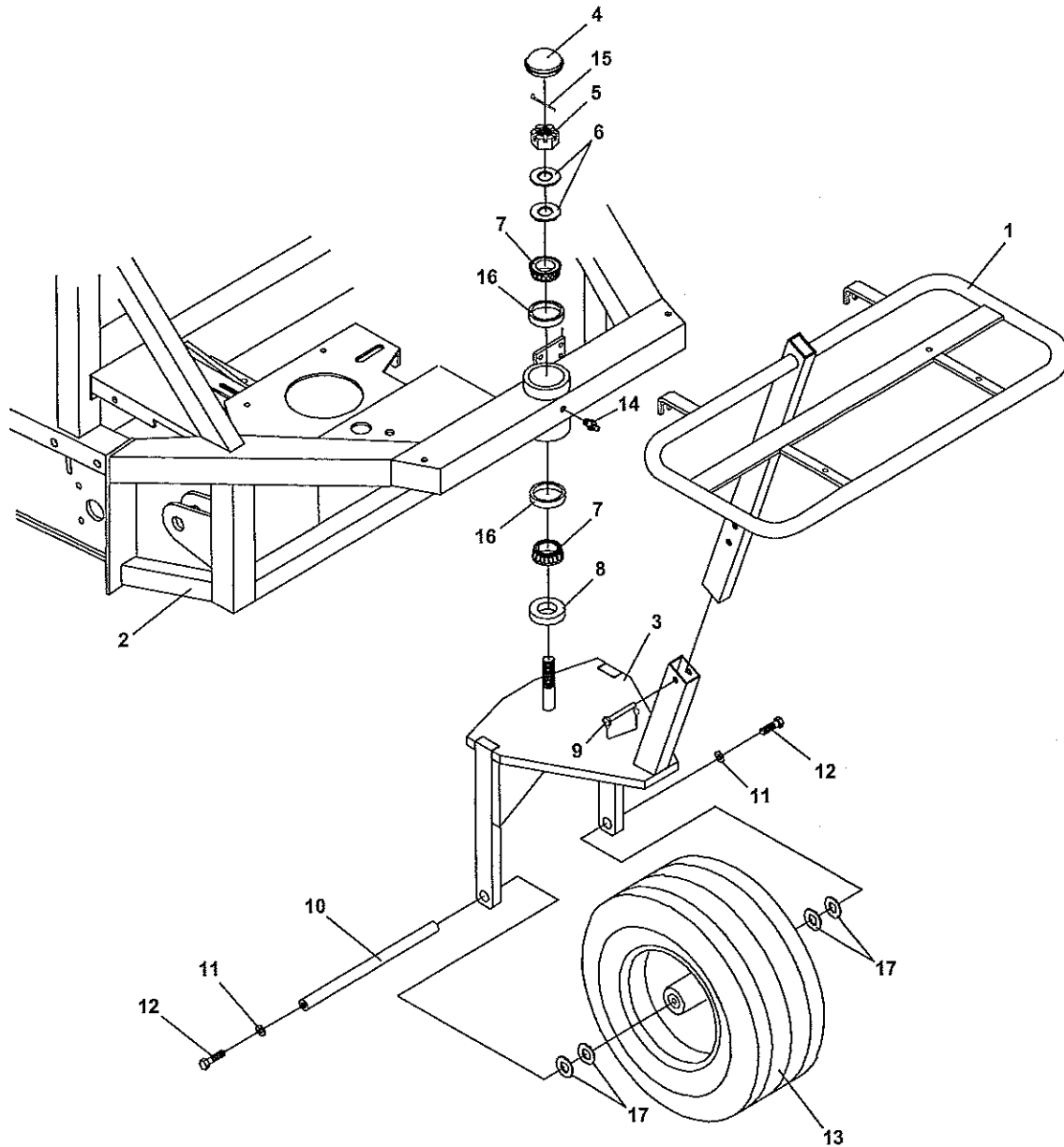
## FIGURE 5

ITM	PART NO.	DESCRIPTION	QTY	ITM	PART NO.	DESCRIPTION	QTY
1	53-173	WHL-12X12X24 TIRE	2				
	53-174	RIM-12X9.5	2				
2	64187-03	WHEEL NUT 1/2-20	10				
3	83-P118	BUSHING, 1-1/8" P1	2				
4	53-059	HUB, 5-BOLT, 1/2"HOLES	2				
5	91-0816-8	BOLT, 1/2-20	10				
6	4148837	SHAFT-FRONT SPINDLE	2				
7	85-K0416	S/B KEY, 1/4 X 2	2				
8	5126616	KEY-3/8 X 3/8 X 1	2				
9	55-FB22024	BRG-4-BOLT FLANGE 1-1/2	2				
10	29-119	GREASE FITTING	2				
11	99-K56	BOLT-1/2-13 X 1-1/2	8				
12	64141-13	NUT WLF 1/2-13	20				
13	6102184.7	RAIL-HUB SPRCKT CVR	2				
14	64139-24	BLT-WLF 3/8-16 X 1	12				
15	6102127	SPCR-FRT SPRKT (OUTER)	2				
16	83-50B41	SPROCKET	2				
17	85-SS20	SET SCREW-1/4 X 1/2 (USE QTY 2 ON EACH SIDE)	4				
18	6102087	CHAIN, DRIVE (#50)	2				
	81-053	CONNECTOR LINK, #50	2				
19	6102183.7	BRG HOUSING	2				
20	55-100	BEARING-1"	2				
21	29-053	GREASE FITTING, 1/4-28	2				
22	90-0808	BOLT	8				
23	64163-86	WASHER-.265X.625X.125	2				
24	6102212.7	FRAME-MAIN	1				
25	6102135.7	SHIELD-BEARING	2				
26	64139-08	BOLT-5/16-18X3/4	8				
27	6102120.7	COVER PLATE	2				
28	99-K74	BOLT, 1/4-20 X 1	2				
	6102158	OPT WHL WEIGHT KIT (INCLUDES ITEMS 29 - 35)	2				
29	F2742	SCREW-5/16-18 X 3/4	4				
30	64229-05	LOCKNUT, 1/2-13 NYLON	4				
31	6102157	SPACER-WHL WEIGHT	4				
32	64025-09	HEX, NUT 1/2-13	8				
33	6102156	STUD-WHL WEIGHT	4				
34	64123-135	BLT-HEX 1/2-13X5	4				
35	6102099	WEIGHT-WHL	16				

# REAR WHEEL ASSEMBLY

# ROLLMATE SOD LAYER

FIGURE 6



# ROLLMATE SOD LAYER

# REAR WHEEL ASSEMBLY

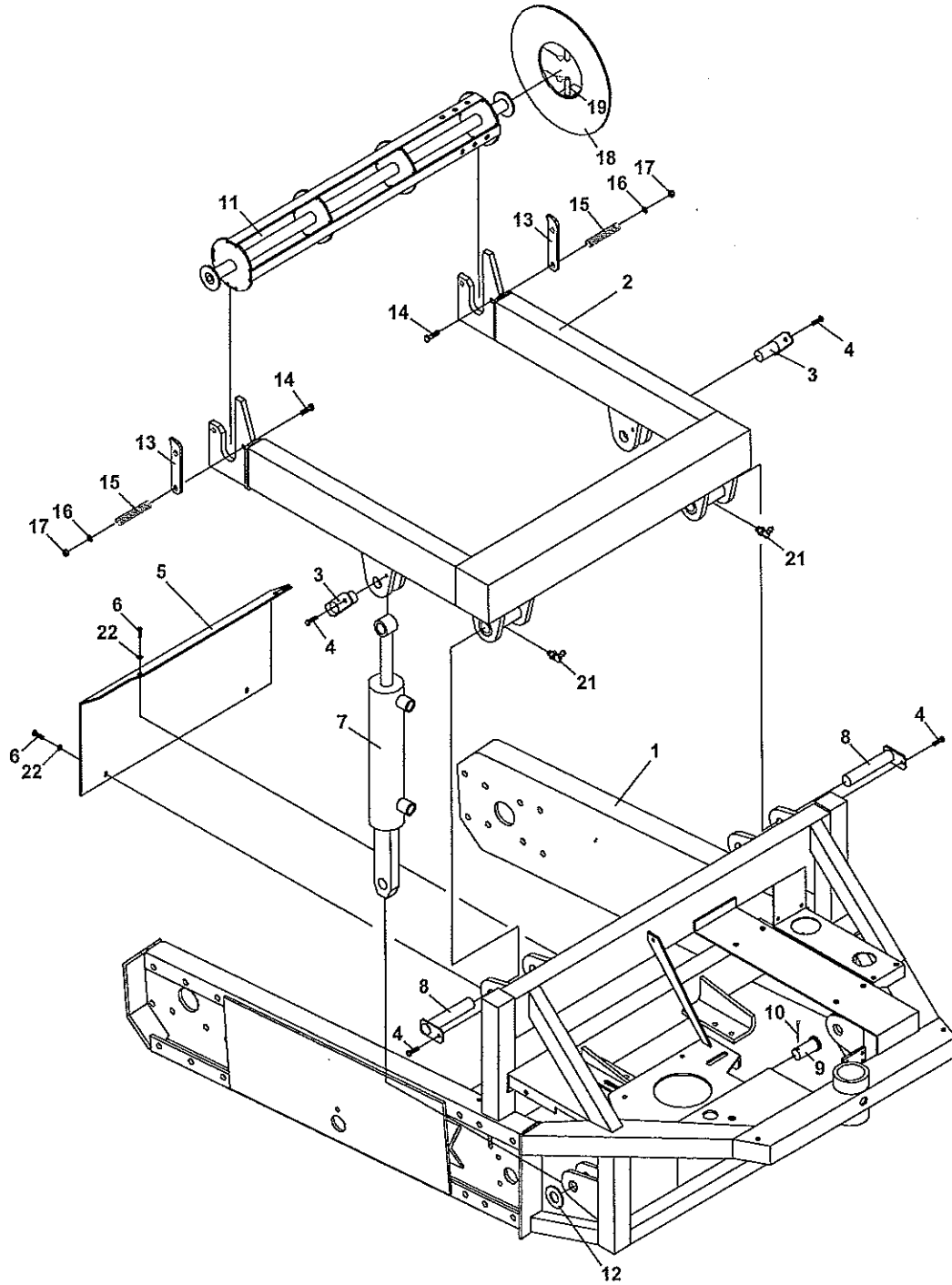
## FIGURE 6

ITM	PART NO.	DESCRIPTION	QTY	ITM	PART NO.	DESCRIPTION	QTY
1	6102200.7	HANDLE-WELD ASSY	1				
2	6102212.7	FRAME-MAIN	1				
3	6102192.7	STEERING YOKE ASSY	1				
4	53-068	HUB CAP	1				
5	99-E19	CASTLE NUT, 1-14	1				
6	64163-64	WASHER	2				
7	48043-04C	CONE, OUTER BEARING	2				
8	89-017	SEAL	1				
9	03-018	PIN	1				
10	6102091	SHAFT-REAR AXLE	1				
11	64163-43	WSHR.443/.454X1X11	2				
12	64139-24	BLT-WLF 3/8-16 X 1	2				
13	53-157	WHL-W/20X10.00X8	1				
14	29-053	GREASE FITTING-1/4 LNG	1				
15	02-CP0412	COTTER PIN, 1/8 X 1-1/2	1				
16	48043-03C	CUP, OUTER BEARING	2				
17	64163-06	WSHR-.768/.756X1.25X14	A/R				

# LIFT FRAME

# ROLLMATE SOD LAYER

FIGURE 7



# ROLLMATE SOD LAYER

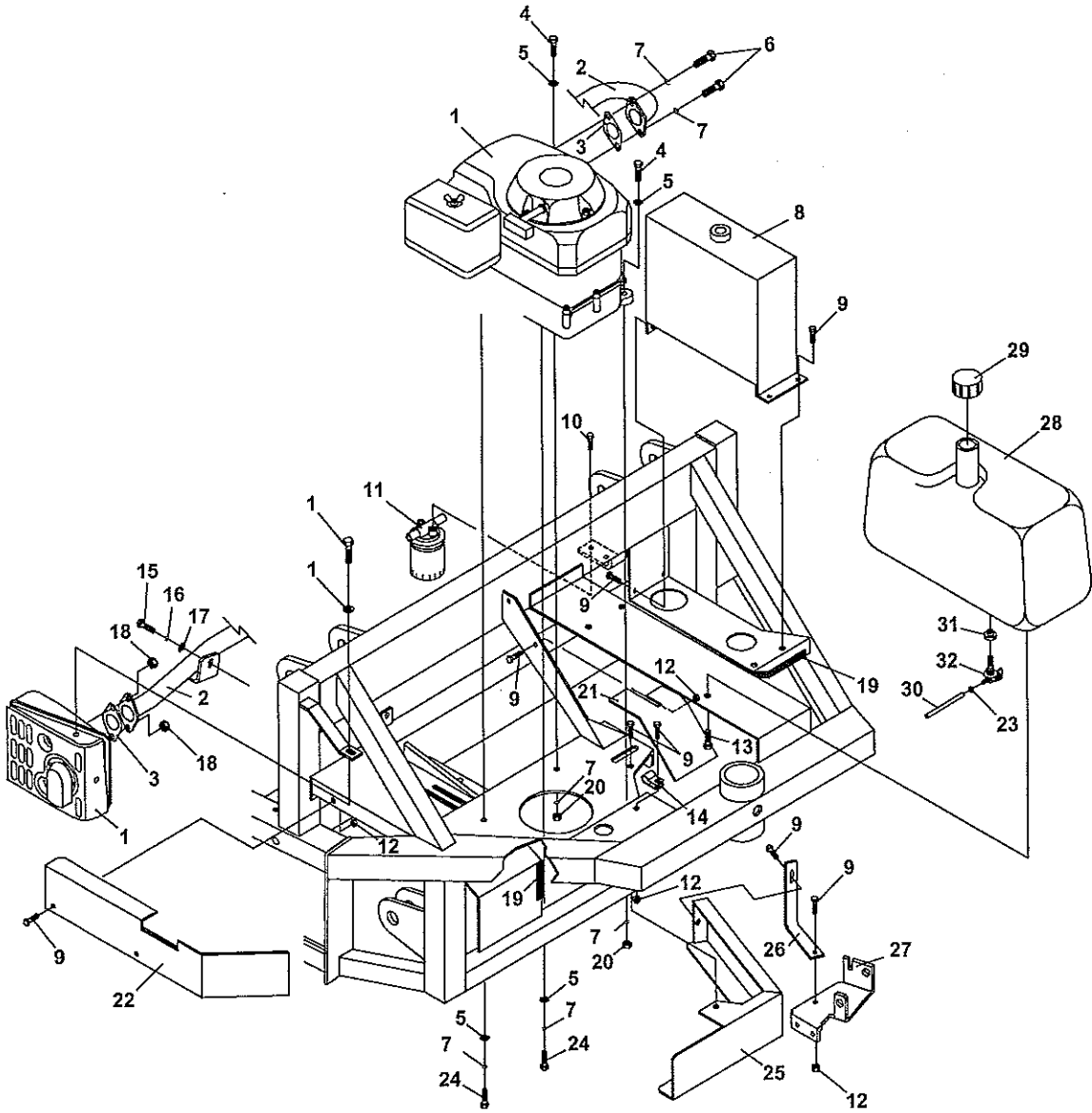
# LIFT FRAME

## FIGURE 7

ITM	PART NO.	DESCRIPTION	QTY	ITM	PART NO.	DESCRIPTION	QTY
1	6102212.7	FRAME-MAIN	1				
2	6102105.6	LIFT FRAME	1				
3	6102125	PIN-LIFT ARM CYLINDER	2				
4	64139-02	BLT-WLF 1/4-20X1/2	4				
5	6102133.7	SHIELD-FRONT	1				
6	64139-04	BOLT-WLF 1/4-20X3/4	4				
7	23-070	CYLINDER, HYD. 2 X 8	2				
8	6102151	PIN-LIFT ARM PIVOT	2				
9	03-1620	CLEVIS PIN, 1" X 2-1/2"	2				
10	02-CP0612	COTTER PIN, 3/16 X 1-1/2	2				
11	6102165.6	MANDREL WELDMENT	1				
12	64163-84	WSHR-1.015 X 1.75 X.125	2				
13	6102061.6	LOCK-MANDREL	2				
14	64123-67	BLT-HEX 3/8-16X2	2				
15	41-053	SPRING	2				
16	64163-61	WSHR .81X.406X16GA	2				
17	64229-03	LOCKNUT-NYLON 3/8-16	2				
18	6102170.6	MANDREL ROLL STOP	1				
19	03-021	PIN-SAFETY SNAP 3/8X1-1/2	2				
20*	45-073	CABLE-LANYARD	2				
21	29-045	GREASE FITTING	2				
22	453023	FLATWASHER, 1/4	4				

\* NOT ILLUSTRATED

FIGURE 8



# ROLLMATE SOD LAYER

# ENGINE/TANKS/SHIELDS)

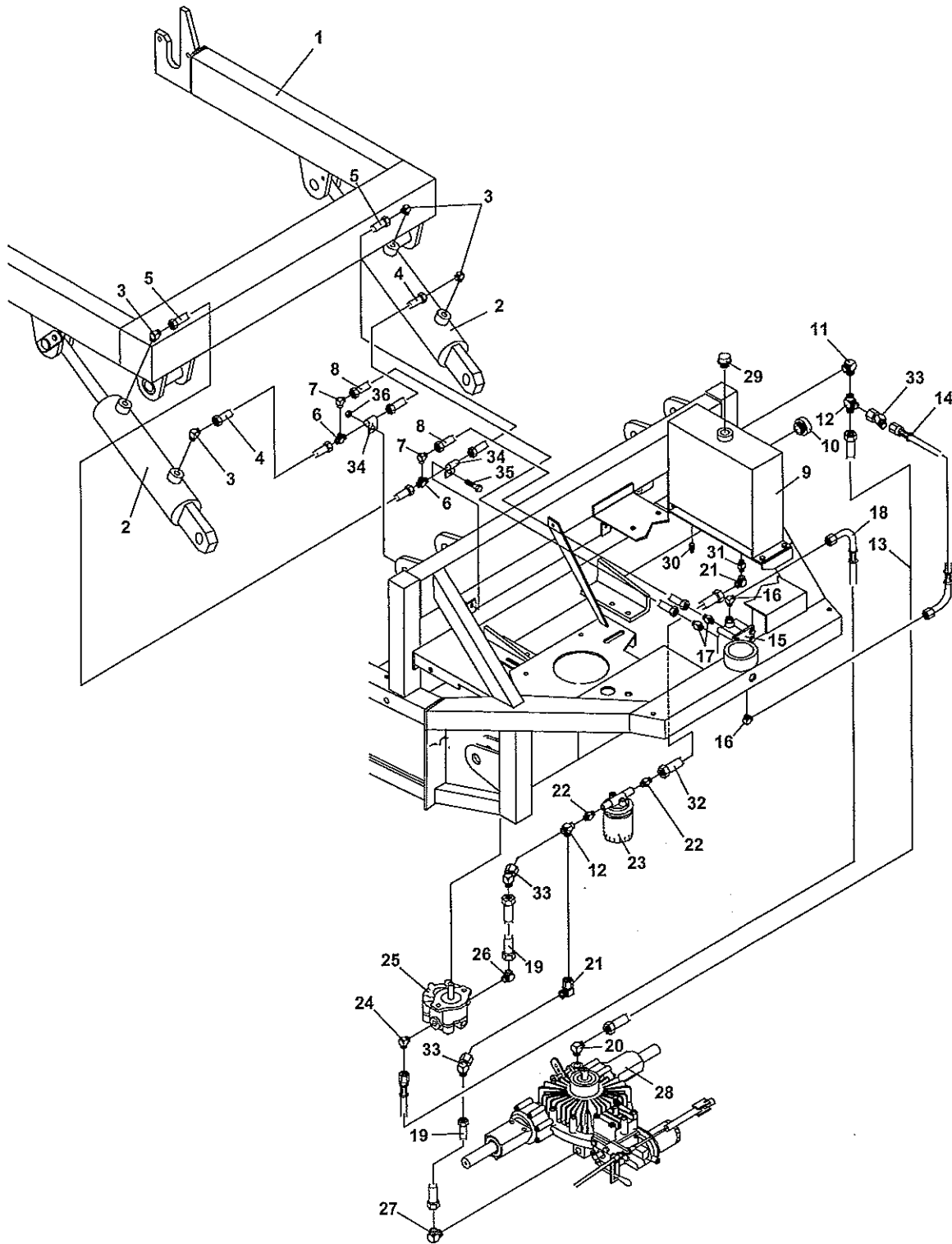
FIGURE 8

ITM	PART NO.	DESCRIPTION	QTY	ITM	PART NO.	DESCRIPTION	QTY
1	13-110	ENGINE-11 HP HONDA	1				
		MUFFLER	1				
		BOLT	1				
		WASHER	1				
2	6102198	EXHAUST PIPE WLDMT	1				
3	13-445547	GASKET-EXHAUST	1				
4	64123-61	BLT-HEX 5/16-18X1-3/4	2				
5	64163-02	WSR-.321/.328X.593/.608X11	4				
6	64205-001	BLT-MET M8-1.25X20	2				
7	64006-02	LOCKWASHER-5/16	6				
8	6102054.7	OIL TANK	1				
9	64139-04	BOLT-WLF 1/4-20X3/4	11				
10	64139-02	BLT-WLF 1/4-20X1/2	2				
11	21-093	FILTER-HYD	1				
	21-095	FILTER HEAD	1				
12	64141-2	NUT-WLF 1/4-20	5				
13	64139-21	BLT-WLF 3/8-16X3/4	4				
14	11-019	WIRECLIP-9/32 X 1/2	1				
15	64205-038	BLT-METRIC M6-1.00X20	1				
16	64006-1	LOCKWASHER, 6MM	1				
17	64163-86	WASHER-.265X.625X.125	1				
18	64207-01	NUT-HEX,M8-1.25	2				
19	56-027	TRIM-LOC 8"	1				
20	64025-02	NUT-HEX 5/16-18	2				
21	6102208.7	SHIELD-FAN	1				
22	6102210.7	WLDMT-SHIELD	1				
23	11-017	CLAMP-HOSE 5/8"	2				
24	91-0508	BOLT,5/16-24 X 1	2				
25	6102180.7	SHIELD-BELT/FAN	1				
26	6102179.7	BRACKET-SHIELD	1				
27	6102075.7	BRACKET- F/N/R	1				
28	2722286	TANK-FUEL	1				
29	2721520	CAP-FUEL	1				
30	27-001	HOSE-1/4 FUEL LINE 18"	1				
31	4132325	GROMMET-FUEL TANK	1				
32	38540	VALVE-FUEL W/FILTER	1				

# HYDRAULIC ASSEMBLY

# ROLLMATE SOD LAYER

FIGURE 9





# ROLLMATE SOD LAYER

# HYDRAULIC ASSEMBLY

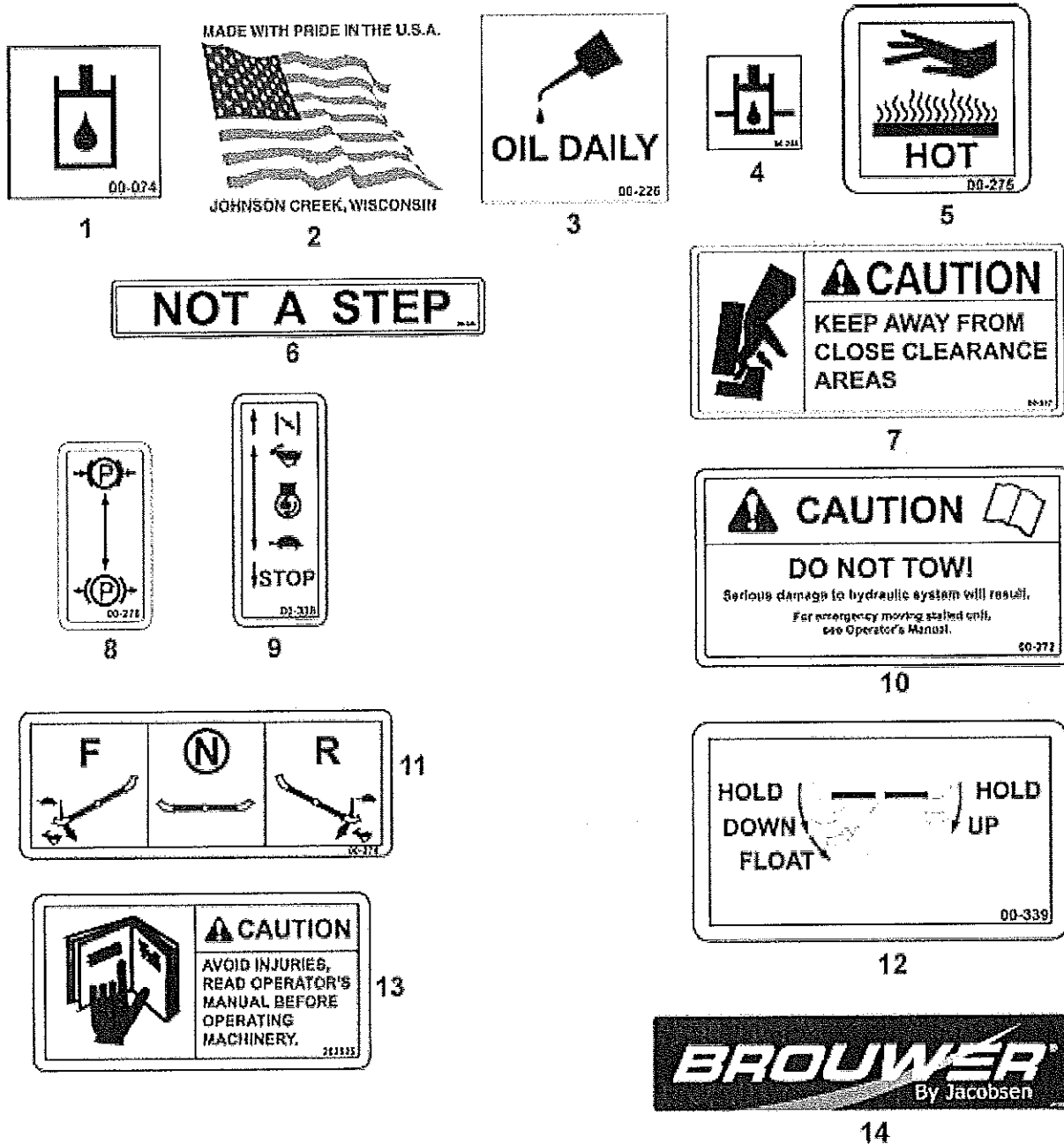
## FIGURE 9

ITM	PART NO.	DESCRIPTION	QTY	ITM	PART NO.	DESCRIPTION	QTY
1	6102105.6	LIFT FRAME	1				
2	23-070.6	CYLINDER-HYD	2				
3	25-2103-6-6	FITTING-90	4				
4	20-146	HOSE, 1/4 X 25.5	2				
5	20-217	HOSE, 1/4 X 20	2				
6	25-033T-6-6	FITTING-UNION TEE	2				
7	25-3903-6-6	FITTING-90	2				
8	20-077	HOSE, 3/8 X 19	2				
9	6102054.7	OIL TANK	1				
10	H9103	FITTING, SIGHT GLASS	1				
11	25-2103-12-10	FITTING-90	1				
12	H6174	FITTING-TEE	2				
13	22-002	HOSE-PUSH LOCK 5/8 X 20	1				
14	20-141	HOSE-3/8 X 19.5	1				
15	23-137	VALVE-W/FLOAT	1				
16	25-2503-6-6	FITTING-90	2				
17	25-0503-4-6	FITTING-STR	2				
18	20-142	HOSE-3/8 X 35	1				
19	22-019	HOSE-PUSH LOCK 5/8 X 15	2				
20	25-2503-10-10	FITTING-90	1				
21	25-3903-10-10	FITTING-90	2				
22	25-0503-12-10	FITTING-STR	2				
23	21-093	FILTER-HYD	1				
	21-095	FILTER-HEAD	1				
24	25-2503-8-6	FITTING-90	1				
25	21-097	PUMP-HYD GEAR	1				
26	25-6801-L-10	FITTING-90	1				
27	25-6801-LL-10	FITTING-90	1				
28	51-038	TRANSAXLE	1				
29	21-098	CAP-BREATHING	1				
30	H8011	PLUG-MAGNETIC	1				
31	25-0103-12-10	FITTING-STR	1				
32	22-036	HOSE-PUSH LOCK 5/8X17.5	1				
33	25-3703-10-10	FITTING-45	3				
34	48228-2A	CLAMP	2				
35	64123-47	BLT-HEX 5/16-18X1-1/4	1				
36	64141-6	NUT, 5/16-18	1				

# DECALS

# ROLLMATE SOD LAYER

FIGURE 10



# ROLLMATE SOD LAYER

# DECALS

## FIGURE 10

ITM	PART NO.	DESCRIPTION	QTY	ITM	PART NO.	DESCRIPTION	QTY
1	00-074	DECAL-HYD OIL SYMBOL	1				
2	4116761	DECAL-MADE IN USA	1				
3	00-226	DECAL-LUBE OIL SYMBOL	2				
4	00-248	DECAL, OIL LEVEL	1				
5	00-275	DECAL, HOT SURFACE	1				
6	00-246	DECAL-NOT A STEP	2				
7	00-247	DECAL, KEEP AWAY	2				
8	00-270	DECAL, PARK BRAKE	1				
9	00-338	DECAL-THROTTLE W/CHK	1				
10	00-272	DECAL-CTN DO NOT TOW	1				
11	00-274	DECAL-F/N/R LEVER	1				
12	00-339	DECAL-HYD CNTRL LEVER	1				
13	202525	DECAL-CTN READ MANUAL	1				
14	4131393	LABEL-BROUWER	3				

\* NOT ILLUSTRATED



0)

0)

0)

**BROUWER TURF LTD.**

23324 Woodbine Avenue, Keswick, Ont. Canada L4P 3E9.

Tel. (905) 476 – 6222. Fax. (905) 476 – 6744.

Web. [www.Kesmac.com](http://www.Kesmac.com) email. [info@kesmac.com](mailto:info@kesmac.com)